

2015.2.25 No.3

Info!

Contents

1. Special Editorial on Wireless LAN	2
2. Introducing convenient tools of the Faculty & Staff Groupware	6
3. Support for the contracts related to the computer software license	8
4. Please reduce the number of prints at OSLs & Satellite Rooms	10
5. What happens with your university account and university e-mail after graduation, transfer to another department or retirement	11
6. University ICT Promotion Council Exhibit Report	14
7. Introduction and operation of the document management system	16
8. IIMC Website was renewed	18
9. Event Information	19
10. Workshop Information	19
11. Information security issues (4 th) "The information security of mobile PCs"	20

* This English translation is provided for informational purposes only *

The situation of Kyoto University's wireless LAN

■ What is the wireless LAN?

Wireless LAN is a mechanism that uses radio waves to connect a PC, a tablet terminal etc. (hereinafter referred to as “wireless LAN devices”) to the network. Unlike the wired LAN, there is no need to wire a cable and data communication can be done freely while moving as long as it is within the reach of radio waves. However, since the intensity of radio waves is greatly affected by the surrounding environment, communication speed may be lowered and sometimes even may be impossible in certain places where radio waves are difficult to reach or in the presence of other radio waves of the same frequency. Also, if radio waves are delivered, anyone who is in the next room or building will be able to use it, so there is a danger of being eavesdropped by malicious people. In order to avoid this, security measures are applied using data encryption and authentication.

■ Kyoto University's wireless LAN

The configuration example when using wireless LAN at Kyoto University is shown (Figure 1). Data is transmitted and received between the wireless LAN access points (hereinafter referred to as "access points") and the wireless LAN device using radio waves. The access point plays a role of relaying the data transmitted and received by the wireless LAN device to the university network (Kyoto University Academic Information Network System: KUINS). In our university, we have approximately 1,300 access points managed by the IIMC within our university campuses. Apart from the access points managed by the IIMC, others can be installed and managed by the departments. When planning installation at your department, please make sure to check the “Guideline for setting up wireless LAN connecting to KUINS” which has already been set. The guidelines are published on the website. An English version also exists:

[Http://www.iimc.kyoto-u.ac.jp/en/services/ismo/use/regulation.html](http://www.iimc.kyoto-u.ac.jp/en/services/ismo/use/regulation.html)

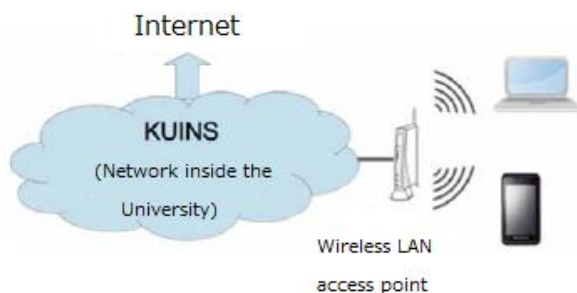


Figure 1. Examples of using the wireless LAN at Kyoto University for communication

■ About the wireless LAN services provided.

If you set the wireless LAN device to a state where the wireless LAN is available (the wireless LAN switch is ON) in the place where the access point's radio waves can reach, a list as shown in Fig. 2 will be displayed. Names such as MIAKO etc. displayed in the list are called SSID (Service Set Identifier).

Currently, 3 wireless LAN services are offered: MIAKO, eduroam and office system wireless LAN.

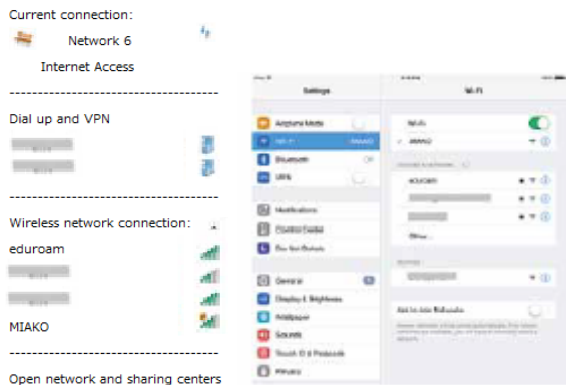


Figure 2. A list of SSIDs displayed on the wireless LAN device (left: Windows PC, right: tablet terminal).

● Introduction of each service(the 3 mentioned earlier)

*Miako Net

Miako Net (<http://www.miako.net>) is a wireless LAN service.

In order to use it, please select the SSID displayed as MIAKO on the wireless LAN device and connect. After connecting, by using the PPTP and ssh port forward connections, you can use the net etc. from inside and outside of the university.

*Eduroam

Eduroam is a project consisting of campus wireless LAN among universities and other educational research institutions deployed in 69 countries and regions around the world including Japan for achieving a mutual benefit, and in Japan national Informatics laboratory (NII) serves as eduroam JP. Kyoto University is also participating in the project, and the eduroam account can be used not only by Kyoto University but also by other universities and research institutes participating in eduroam. To use it please select SSID displayed as "eduroam" on wireless LAN device and login with eduroam account and password. You can acquire the eduroam account by logging in with SPS-ID or ECS-ID at <https://eduroamshib.nii.ac.jp/>. Also, although it is limited within Kyoto University, a visitor account can also be used.

~Visitor account

It is a temporary account, available for eduroam and PPTP service. Applications should be carried out by our university faculty staff holding SPS-ID.

As for the application method,

- (1) Login to faculty staff groupware (<https://www.tam2.adm.kyoto-u.ac.jp>)
- (2) Click "Operation / Regulations" at the top of the screen
- (3) Click "KUINS Visitor Account Issuing System" Please proceed. Since there are notifications concerning the issuing of accounts, please apply after checking them.

*Office system wireless LAN

We offer wireless LAN service for the iPad paperless conference system (ECO Meeting). The conference system has implemented a number of functions that are required by departments, including functions depending on the meeting agenda and the voting function. It is currently being used by 17 departments. For inquiries about this matter, please contact the Electronic Secretariat of the Information Department-Information Promotion Division (ecomt-qa@mail2.adm.kyoto-u.ac.jp).

●The start of new wireless LAN services

In addition to the above three services, two new services of KUINS Air and carrier WiFi started.

*KUINS Air

If you login to KUINS Air with your SPS-ID or ECS-ID, you can browse web pages inside and outside the campus.

Since VPN connection is unnecessary, I believe that you can use it as a simpler procedure. If necessary, VPN service including PPTP fixed VLAN connection can also be used.

For usage, please visit <http://www.iimc.kyoto-u.ac.jp/en/services/kuins/wifi/>.

*Carrier WiFi

You can use the WiFi service provided by three mobile phone companies (NTT docomo, KDDI (au), SoftBank). Please check the announcement of each carrier for details.

NTT docomo https://www.nttdocomo.co.jp/service/data/docomo_wifi/

KDDI (au) <http://www.au.kddi.com/mobile/service/smartphone/wifi/>

SoftBank <http://tm.softbank.jp/consumer/wlan/> (BB mobile point user)

Table 1. Summary of the service provided.

	Authentication	Web page browsing on campus and off campus	Browsing web pages published only on campus
MIAKO network	—	If connected through VPN after connecting to MIAKO, it is viewable	If connected through VPN after connecting to MIAKO, it is viewable
eduroam	eduroam account	Viewable	If connected through VPN after connecting to eduroam, it is viewable
Wireless LAN for the office system use	designated account	Viewable	Viewable
KUINS Air	SPS-ID, ECS-ID	Viewable	Viewable
Carrier WiFi	the Wifi service for contractors with the 3 mobile phone companies	Viewable	If connected through VPN, it is viewable (there are cases where according to the combination of the carrier service and the VPN service it cannot be used)

■ We increased the number of access points

In order to increase opportunities of using wireless LAN in places where many people gather, such as lecture halls and conference rooms within the university campus, we will make 600 units consisting of access points with high speed communication complying with IEEE 802.11ac by March 2015. IEEE 802.11ac is faster than the conventional IEEE802.11b / a / g / n and also expands the area, so I think that you can use it comfortably.



Figure 3. KUINS access points installed (left: conventional type; right: starting from 2014)

VPN Service

VPN (Virtual Private Network) is a technology for creating a virtual dedicated

network as shown in Fig. 4 on the Internet. By using the VPN service offered at our university, you can browse the "open to the public only" Web page from outside the campus. By using the PPTP fixed VLAN connection service, it is also possible to access laboratory equipment.

There are 4 types of VPN service that we offer at our university: "PPTP service", "SSTP service", "OpenVPN service" and "SSH port forward service".

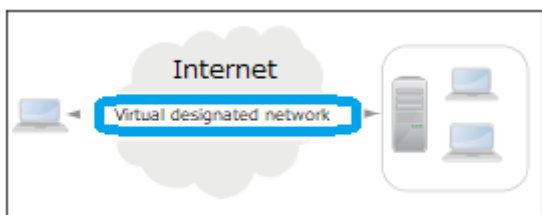


Figure4. Schematic Diagram of the VPN Service

●PPTP service <http://www.iimc.kyoto-u.ac.jp/en/services/kuins/vpn/use/pptp.html>

It is the service with the most users among the four VPN services. It can be used on Windows PC, Mac, iPhone, Android terminal. When a VLAN administrator applies for PPTP fixed VLAN connection service from "KUINS connected device registration database", it can connect to VLAN of KUINS - III of laboratory etc. In some cases the PPTP service may not be available at home or outside the network environment.

●SSTP service <http://www.iimc.kyoto-u.ac.jp/en/services/kuins/vpn/use/sstp.html>

It can also be used in environments where the PPTP service cannot be used due to issues such as home network equipment. It is one of the SSL VPN methods that connects to the university via a route encrypted with SSL / TLS using a personal digital certificate issued in advance. It is available only for Windows.

●OpenVPN service

<http://www.iimc.kyoto-u.ac.jp/en/services/kuins/vpn/use/openvpn.html>

It has almost the same characteristics as SSTP, but OpenVPN can be used not only for Windows but also for Mac, iPhone and Android terminals.

●SSH port forward service

<http://www.iimc.kyoto-u.ac.jp/en/services/kuins/vpn/use/sshportforward.html>

SSH (Secure Shell) is a protocol for communicating with a remote host over an encrypted path. "Port Forward" is a function to transfer the port of your personal computer to the port of any remote host via the SSH server. This allows you to use the port of any remote host as the port of your personal computer.

(IIMC Information Infrastructure Division)

[Did you know about this?]

-page 6-

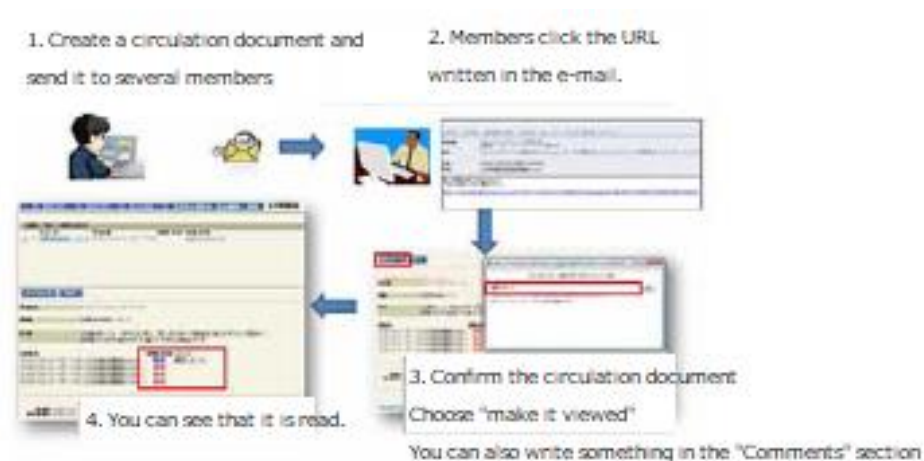
Introducing some useful functions of the faculty and staff groupware

The Electronic Office Department of the IIMC provides groupware, which is a portal site used by all faculty and staff for their daily work.

You probably know already about the way to use functions such as the bulletin boards and the document sharing etc. because the utilization rate is high, but we will introduce here other useful functions that are also available.

■ Circular notice

You can show circular documents to multiple users at once and obtain answers on the web screen. For example, it can be used for circular documents you definitely want people to see, attendance to scheduled meetings and guidance for meetings etc. It can also be used for unread notifications.



Chartflow for using the circulation board

■ Scheduling adjustment

You haven't collected by e-mail the responses about scheduling meetings?

And haven't you added up the results on Excel?

In case there are many people attending the meeting, it is hard to schedule a date for it. Schedule adjustment can show potential dates for the meeting date to multiple users and obtain answers. The respondent displays a list automatically summarized by checking "o" and "x" on the potential meeting dates. Also, once the meeting date was scheduled, the respondents will be automatically notified by e-mail. This was scheduling becomes very easy.



Chartflow for using the schedule adjustment

■ Schedule (Web Scheduler)

“Schedule” is a tool you can use to manage your schedule. You can also display the schedule of other members of the same department with you and therefore you can use it as the first step of information sharing. You can also connect it with other calendar tools; you can load the contents of Google Calendar and Outlook into your calendar and vice versa.

Screens fit for smartphones and mobile phones are also available, so you can check the schedule from outside the campus.



One screen from the “Schedule”.

■ Bulletin board for faculty members · Facility reservation · Document sharing function

The faculty and staff portal provides a page dedicated to the department you belong to. That is where tools such as “bulletin board”, “facility reservation”, “document sharing (Department file storage)” etc. can be used. In order to use it, settings are necessary, so please contact the Electronic Secretariat for departments where it is not yet implemented.

As mentioned above, the faculty and staff groupware has many functions. Please try to use it in order to make your work more effective. For specific usage, please refer to the “Groupware Q&A” from the faculty and staff portal site: (<https://www.tam2.adm.kyotou.ac.jp/sys5/db/01/newfaq.nsf>).

Currently, we are reviewing the menu and design of the faculty and staff portal site and faculty staff groupware. We are considering improvement on a daily basis in order to make a better system, so please expect future improvements for the faculty and staff groupware.

Faculty and staff portal site (faculty and staff groupware):

<https://www.tam2.adm.kyoto-u.ac.jp/>

■ Contact address

Please contact the Electronic Secretariat for usage and requests related to the groupware.

Extension number: Headquarters 16-2198

E-mail: e-office@mail2.adm.kyoto-u.ac.jp

(Makoto Miyabe: IIMC IT planning Room/Information Department/ Information Infrastructure Division Working System Management Team Leader)

Support for making contracts related to computer software licenses

The IIMC provides tools for software license coordination within the university, negotiation with contractors, making agreements and managing the licenses.

There is a large variety of software ranging from general software programs (1-4) as the ones listed below to dedicated software programs (5-9) used for professional education and research:

- ① So-called electronic stationery software for preparing documents, tables and presentation materials
- ② Multimedia design software for graphics, photos, video and music editing
- ③ E-mail and communication software for remote conferences
- ④ Educational software for multimedia language education and e-learning
- ⑤ Software for formulas and signal processing
- ⑥ Software for large scale high speed calculation
- ⑦ Statistical processing software
- ⑧ Chemical analysis software
- ⑨ Geographic information analysis software

In the past, each of the research laboratories and offices had to purchase and use independently these software programs when necessary. However, ① ~ ④ which makes up the general software, was purchased for the whole university by getting a campus license so as to reduce the software purchasing expenses. Also, for dedicated software such as ⑤ ~ ⑨, similar effects can be obtained by getting group license collectively for the laboratories who need it.

■Types of license contracts

●Software whose sale is entrusted to the Co-op and for which Kyoto University has acquired a campus license agreement:

- Microsoft university license
- Adobe CLP license
- JUSTSYSTEM license for educational institutions
- Symantec antivirus license
- National Instruments (LabVIEW campus site license, LabVIEW eLearning course, Multisim campus site license)
- Morisawa font certified school license

●Software for which research laboratories etc. had made a group license contract and for which the fee becomes cheaper when the number of participants increases:

· MAPLE

· ChemDraw Ultra

· ArcGIS

● Software for which research laboratories etc. had made a group license contract and even if the number of participants increases, the fee does not change:

· MATLAB

■ Please manage the license properly!

Each department is responsible for managing licenses. To manage licenses at departments, we have selected department supervisors who organize the departments as a whole and managers who organize each major or laboratory to manage them. We report twice a year for the administrative organization (including technology) and the annual use situation in educational researcher organization, so we appreciate your cooperation in the survey.

ASSETBASE, manufactured by Uchida Yoko Corporation, is made as a tool for managing computer software in each department. When using ASSETBASE, please log in with the ID and password given via the department general manager from each department. (Please note that ID and password are for either administrator or user).

To use ASSETBASE, please try to access it from the Kyoto University faculty and staff portal site (faculty staff groupware) > work / regulations > software license management or directly access it from the URL below. However, please keep in mind that it is limited to access from within the university (In case of using from outside the university, please connect to the LAN within the university by PPTP connection etc.): <https://sam.adm.kyoto-u.ac.jp/portal/index.asp>

In order to use ASSETBASE, we hold briefing sessions for administrators. Upgrade ASSETBASE version is also included, so please participate if you are administrating it.

■ Implementation of copyright seminars

In order to raise the awareness to properly use the licenses a computer software copyright seminar is held every year in December. The people in charge with the management request that people using the software to actively participate in these seminars.

■ Notification of new contract licenses:

At present we started to apply for Apple's Volume Purchasing Program (VPP) for educational institutions.

When using this program, Apple's software is given with a 50% discount provided

that they are bought in a bulk manner (>20).

When it comes to the application procedure, each department shall apply for IIMC for VPP use and IIMC will register the VPP account and then inform each department about it. After that using the VPP account you will be able to apply for purchasing. However, please note that there will be 1 account for each department.

Further details will be announced as soon as they are decided.

(Hiroji Terashima: Information Department/ Information Promotion Division
Information Infrastructure Team)

[Please cooperate with us!]

-page 10-

Please cooperate in order to reduce the number of prints for OSLs and satellite rooms

The IIMC provides a “printer service” consisting in non-chargeable monochrome printing from the OSL of the Academic Information Media Center South and North Buildings, OSLs attached to libraries of the campuses, Yoshida South General Library OSL and each satellite room’s PC terminals.

Towards the establishment of a sustainable campus that utilizes effectively and sustainably the resources within Kyoto University, we approved the “Blink-U Project- Blue Economy in Kyoto University” and at the Academic Information Media Center South and North Buildings we placed a posted about this close to the printers.

This service has a restriction on the number of sheets used which is 200 for 1 year (from April to March of the following year), but each of us should be self-aware and this should contribute to the decrease in the amount used. We appreciate the cooperation of everyone who uses the printing service.

What is the Blink-U Project?

In order to achieve the “Blue Economy”* at Kyoto University we encourage the cut of expenses due to practicing an environmental behavior and to increase the extent of problem awareness. Along with these, by creating new cash flows for further investments in the project itself and related projects, the reduction in the use of various resources and effective utilization of waste within the campus limits is expected to lead to a sustainable campus that uses efficient and sustainable resources.

Ecole-du-Kyoto2014 Executive Committee (Kyoto University Environment Safety Organization, Kyoto University Graduate School of Global Environmental Studies, Kyoto University Facilities Division) organized “Kyoto University First Sustainable Campus Building Project Contest” and the Blink-U project got the best prize there.

*Blue Economy (from the proposal of the Blink-U Project)

Blue Economy is a concept opposite to the so called “Red Economy”, which emphasizes economic growth based on mass production, mass consumption, mass disposal and price competition, therefore lacking concern about the environment. Also, it aims to reduce the risks associated with environmental problems and ecosystem losses, improving the quality of human life and eliminating social inequality (reducing the trade-off between environmental impact and economic growth), complementing the concept called “Green Economy”.

‘Green Economy’ states that the introduction of technologies that are efficient for the environment and economically speaking, putting emphasis on environmental activities as a point of view relatively does not contribute to getting profits without subsidies and external assistance, doesn’t maintain the technologies on continuous basis and doesn’t help the development. In other words, focusing solely on growth that fixes the trade-off between the environment and the economy, there is a concern that technology and the systems will show only some effects in terms of emission reduction and environmental protection and as a result, if the way of making a cash flow and how to use it is not envisioned, it will be difficult to create a sustainable whole socio-economic system. As a breakthrough from this stage, the concept of “Blue Economy” was used, “contributing to the building of a sustainable society while creating new cash flow by introducing systems and technologies that contribute to solving social problems”(by Gunter Pauli, 2010) and it can be considered an economic concept.

プロジェクト概要
 このプロジェクトでは、「目」のアイコンを貼った紙の印刷物の裏面やフリーライダーに「目」のアイコンを貼ることで、フリーライダーの裏面に貼った「目」のアイコンが、フリーライダーの裏面に貼った「目」のアイコンのフリーライダー（フリーライダー）を減らさざることを目的としている。

But Wait...
 「目」を貼るだけで、フリーライダーを減らすのには？」

本プロジェクトは、Bateson, M. Nettle, D. and Roberts, G. (2006) *Cues of being watched enhance cooperation in a real-world setting* *Biological Letters*, vol.2, no.3, 412-414 に基づく。

1. 紙、コピー、ミルクのサーバーと、資料箱を準備。
2. 「紙、コピー、ミルクの量はそれぞれ 30 ペース、50 ペース、10 ペースである。」と書いてあるポスターを貼付。
3. ポスター上部に「目」、または「花」の写真を掲載（右下図参照）。
4. 「目」と「花」を準備で交換。
5. 得られたインプリケーション：①「花」よりも「目」が、フリーライダーの削減に大きな効果を示す、②印刷されたものであれば、「目」が、個人の影響を高める。

※本プロジェクトは、本学環境安全推進機構サステイナブルキャンパス推進委員会第1期サステイナブルキャンパス（SD）推進コンテスト「環境教育推進プロジェクト」である。京都大学サステイナブルキャンパス推進委員会に賛同して、下記リンク参照。
http://www.esb.kyoto-u.ac.jp/?page_id=1270 注(原)Bateson, M. et al. (2006) *Biol p.413*

Planned to be posted this way

Project Overview:

In this project, by putting stickers of “eyes” and stating the current status of the paper used for copying and its costs (economic and environmental costs) etc. as enlightenment sentences close to the printers, we aim to reduce the free prints when using the copy machine by setting a donation box nearby.

But wait...is it possible to reduce the free prints just by installing “the eyes”?

This project is based on the following research paper:

Bateson, M. Nettle, D and Roberts, G. (2006) *Cues of being watched enhance cooperation in a real-world setting*, *Biology Letters*, vol.2, no.3, 412-414.

(Eda Setsuko: IIMC Education Support Division/ Information Department-Information Promotion Division-Educational Information Team)

What happens with your university account and university e-mail after graduation, transfer to another department or retirement etc.?

The university accounts (ECS-ID(Student accounts) and SPS-ID(faculty and staff accounts)) and the university e-mail (KUMOI(Student e-mail) and KUMail(faculty and staff e-mail)) cannot be used if the affiliation with Kyoto University expires.

Below it is given the necessary procedure and the work that needs to be done according to each case, so please use it as a reference for your preparation.

■ Students who will graduate, withdraw from the university etc. in March

By the 31st of March 2015 please prepare the things listed below.

● Make sure you back up for the necessary files and e-mails

① Backing up for the necessary files

Log in to the PC terminal of the educational computer system and save the necessary files by using the USB memory.

It cannot be saved on CD and DVD.

② Backing up for the necessary e-mails

The student e-mail KUMOI can be backed up as shown below:

-Get the data to your own PC by accessing usual e-mail software

-Create your own e-mail software such as a Gmail account etc. and read the data there.

③ Make the settings for the e-mail transfer

If you set the forwarding destination, e-mails delivered to KUMOI will be forwarded there for 3months after the account is stopped (until the end of June).

For the forwarding settings, proceed from the Kyoto University Student Account Management's "Student Account etc. change of settings (password, change in the university e-mail forwarding etc.). (<https://ecs.iimc.kyoto-u.ac.jp/>)

● Notification of new e-mail address

Please inform the people you keep in touch with about the change of the e-mail address.

■ Students enrolled at Kyoto University even after April, but whose status or affiliation changes

Continue being enrolled at Kyoto University, but status changes due to going to graduate school, changing departments, changing majors etc. (undergraduate student => graduate student, graduate student => research student, research student => graduate student etc.). For these cases, the same ECS-ID and KUMOI e-mail address will continue to be used.

However, if the student becomes faculty or staff (except for part time lecturer belonging to a different university) then an SPS-ID and a KUMail (e-mail for faculty and staff) e-mail address will be issued, so please use it. Since the ECS-ID will not be usable anymore, please proceed with the above “Students who graduate, withdraw from the university etc. in March”.

If you received a new ECS-ID notification from April, but the ECS-ID is different from the one you have, it is possible that you were registered twice, so please contact the Information Environment Support Center (located on the 1st floor of the Academic Information Media Center South Building).

※For those who need confirmation of their status, we will inform them in May or June by using KUMOI (Student e-mail). If you receive such an e-mail please follow the required procedures.

●The number of usable prints is reset

The number of sheets that can be used for the educational computer system printer is 200/person between April 1st and March 31st. Confirmation of the number of printed sheets is displayed by running the icon “confirm number of prints” from the desktop of the educational computer system’s PC terminal.

On the 1st of April of every year, regardless of the number of prints used, the number of used prints is reset to zero (0).

●About the re-registration for the library’s online service (MyKULINE)

In case the student number changes due to entrance into a graduate school, department or due to a change of department etc, MyKULINE 's re-registration procedure is necessary. For details on the procedure etc., please contact the staff from the attached library (room) to your department or the library’s office (room).

■For the faculty and staff who are transferred, who retire etc. (excluding part-time lecturers of Kyoto University from outside the university)

●In case of continuing the employment relationship with Kyoto University due to a change of jobs inside the university.

The SPS-ID may change according to the next position. Regarding the change, please check with the general affairs department or the human resource staff from your department.

*If there is no change in the SPS-ID, the e-mail address will not change, so please continue using it.

*In case there is a change in the SPS-ID, the e-mail address will also change. Please use the new e-mail address. In addition, the current mailbox is carried over the new e-mail address, therefore for 90 days the e-mail is automatically transferred.

●When you transfer from Kyoto University to another university/company etc.

At the end of your enrollment in our university, the SPS-ID will expire and therefore the Web login, sending and receiving for the normal e-mail software will not be available anymore. Before the SPS-ID expires, save the e-mails and prepare a new e-mail environment for its transfer.

If the forwarding destination e-mail address is set before the SPS-ID expires, it will be transferred to the specified e-mail address for 90days. If you check “leave transfer e-mail in my folder” which is at the top of the e-mail transfer scree, the e-mail will remain in the mail folder of KUMail even after you transfer the e-mail.

If the forwarding e-mail destination is not decided before the SPS-ID expiration, please mention that fact and consult us at this e-mail:

kumail-qa@mail2.adm.kyoto-u.ac.jp.

●When becoming Professor Emeritus of Kyoto University

We are issuing ECS-IDs to the people who become Professor Emeritus based on applications. By acquiring this ECS-ID, you can use the e-mail (KUMOI) and the network as well as the online library service etc. In addition, once you get the ECS-ID and KUMOI e-mail you can use them without any need for yearly updates. Please check below for the application method etc.

http://www.iimc.kyoto-u.ac.jp/ja/services/cert/ecs_id/use/ecs_account.html

In addition, if you request for it, you can extend the transfer period of KUMail in principle for up to one year. However, the transfer destination is limited to KUMOI's e-mail address. If you wish, please complete the following items by June 28th (the day when the normal transfer period expires).

Please apply by e-mail to kumail-qa@mail2.adm.kyoto-u.ac.jp.

*Name

*Email address of KUMail

*E-mail address of transfer destination (e-mail address of KUMOI)

*the reason you apply for it

*the time period for which you wish to extend

●Others:

If you are a part time lecturer of Kyoto University from outside the university, JSPS researcher, trainee, commissioned researcher, private researcher etc. we can issue an ECS-ID for you if you apply for it. Please check below to see the application method:

http://www.iimc.kyoto-u.ac.jp/ja/services/cert/ecs_id/use/ecs_account.html

■Contact address:

Please contact the Information Environment Support Center if you have any questions about obtaining or using IDs or e-mail addresses.

We exhibited at the 2014's Annual Meeting of the University ICT Promotion Council (AXIES)

The IIMC participated and exhibited at the 2014's Annual Meeting of the University ICT Promotion Council (AXIES) held in Sendai from the 10th (Wed) to the 12th (Fri) of December.

■ What is the University ICT Promotion Council (AXIES)?

University ICT Promotion Council (AXIES) is an abbreviation for Academic eXchange for Information Environment and Strategy. Also, the University ICT Promotion Council is a general incorporated association that consists of universities and higher education institutions nationwide. The purpose of establishing it was the contribution to the advancement of education, academic research, culture, and industry in Japan by promoting sophistication of education, research, management, etc. using information communication technology at higher education institutions and academic research institutions through mutual collaboration and collaboration among members.

■ What is the Annual Meeting?

The Annual Meeting is an event that takes place once a year, in the middle of December where its members and higher education institutions and research institutes share and exchange information on each specialty. During this time exhibitions, planning sessions, general sessions, poster sessions etc. are held.

■ Exhibit contents:

The IIMC actively took part in exhibitions, planning sessions and general sessions. At the exhibition, entitled "Kyoto University ICT Basic Strategy Activity New Organizational Structure and Initiatives", the organizational reform of the IIMC done in April 2014, the mission of the five departments established in the IT Planning Office of the Information Environment Organization(The Electronic Secretariat Department, Information Infrastructure Division, Education Support Department, Research Support Division, System Design Division) and of the Information Environment Support Center, as well as the targets and activities of 2014 were shown as a poster.

Besides exhibiting the poster, we exhibited the OCW of Kyoto University and showed a demo of the iPad paperless conference system (ECO Meeting 4U) at the exhibition booth and introduced the contents in more detail.

At this time's organizational reform of the IIMC a department consisting of teachers, administrative staff and technical staff was created; through a system of teacher-staff collaboration we tried to achieve "timely provision of various IT services" and "providing high quality information environment based on the ICT basic strategy of Kyoto University". Chiefs of departments from each university who are in charge with administrative management showed interest in the topic and we received enthusiastic questions such as the tasks that arose during the reorganization.

During the introduction of the iPad paperless conference system, we set up a demonstration meeting and actually operated as a meeting attendee. Efficiency improvement of the meeting is being studied at each university etc. Also, various questions such as about the implementation expenses and developments for Windows were received.



Picture illustrates how explanations were given to visitors.

During the planning session, it was divided into "How to communicate with community-based open source software", "Joint development and cooperation of safety confirmation systems", "Collaboration between university education support systems and educational contents development and distribution". Professor Shoji Kajita from the IIMC's Planning Room- education support department attended as the organizer. In the HPC technology session, Mr. Sohei Yamaguchi, Mr. Jun-ichi Hikita and Kenji Ikeda belonging to the Information Infrastructure Division, Information Department made a presentation regarding the latest HPC technology entitled "Validation of Automatic Vectorization Function by Netlib / vector Benchmark".

During the general session, Mr. Kosuke Ogata, belonging to the Department of Information Infrastructure Division, Information Department, presented "Information Security Measures at Kyoto University and taking care of incidents and their evaluation" (Co-author: Mr. Akio Hirano, belonging to the Information Infrastructure Department, Information Division; also, Mr. Yoshikazu Ishii, belonging to the Department of Information Infrastructure Division, Information Department presented "Construction and Operation of Remote Desktop Services at Kyoto University" (coauthor: Academic Information Media Center, Associate Professor Ueda Hiroshi).

■ Collected information on ICT technology and case examples at universities:

In addition to the exhibit hours I was in charge with I visited other Universities' exhibition booths, participated in planning sessions etc. and through these I gathered and exchanged information.

At other exhibition booths, the latest research contents related to information technology, educational research facilities, electronic teaching materials, e-learning platform products etc. were presented; the latest technology for supporting education, research and administration using ICT and the exhibition of product information, as well as the exchange of information turned out to be a good opportunity to think about the future development of information technology at Kyoto University.

In the planning session, I participated in the one called "How to communicate with open source software based on community" and gained insight on open source projects (Moodle, Sakai, Shibboleth, Quali) widely used both in Japan and abroad. When it comes to the implementation of new technology, the biggest concern is vendor lock and as a countermeasure the open source was developed. For its maintenance and improvement a community is formed, but when the required functions are different depending on the members' organization size etc. I felt the difficulty in maintaining the community.

■ Finally

The IIMC is planning to continue to participate at every Annual Meeting of the University ICT Promotion Council, present the activities related to the information environment of Kyoto University and collect information. This time I wanted to share the knowledge I gained at the Annual Conference of the University ICT Promotion Council to the readers of Info!

(Kenji Tsuji: Information Department/Information Promotion Division/Project Leader)

Introduction and operation of the document management system

The common administrative department located in the Yoshida Minami Campus started using and is managing the “DocuShare”, which is a document and content management software made by Fuji Xerox Company.

When using “DocuShare” it is not necessary to create and manage a separate ID and password. In collaboration with the Kyoto University Integrated Certification System, managed by the IIMC, the account for faculty and staff SPS-ID’s single sign on (SSO) was renovated to allow “DocuShare” use. It makes possible the reduction of the burden of managing multiple passwords and increases the convenience by allowing the use from the faculty and staff portal (Notes/Domino). In the future we expect that various administrative meetings of the International Higher Education whose civil service is borne by our office will use it as a tool for sharing and storing electronic files.

Conventionally, the method of sharing electronic files consists of a file sharing server that is operated and a server administrator that performs folder setting and user setting for each section; the administrator's burden is increased and detailed access restriction settings etc. are complicated, practically it is set as a group in large units and the usage environment had limited operations inside the VLAN. That is where we tried to improve to the next level the conflicting factors that are the security increase and the convenience. On this occasion we focused to an OS that is not restricted to browsers and one that is compatible with the integrated authentication system’s SSO and that we let the user decide the detailed restriction settings and this increased the convenience and ability to search. The document management system that complies with these conditions and that has been introduced in DocuShare.

This DocuShare is basically used on a Web base as described above; if you login to the Notes/Domino can be used from anywhere and from the security point of view, the hardware is set to function in a secure environment. The secure environment takes the information from the integrated authentication system and granting the access rights as set automatically from the organization hierarchy (department/section level) and, if needed, it can grant access rights for groups and individuals as well as to those granting and viewing the access levels. For an increased convenience, although limited within the VLAN, if a certain application is installed (only for Windows), the drag and drop function and others can be used.

Furthermore, as difficult functions for a normal file sharing server etc., the following can be done:

- ① If you specify an arbitrary keyword within the DocuShare instant search within DocuShare and display/use only the authorized documents.
- ② When sharing e-mails addressed to an individual on a group basis, the text contained in the e-mail can be saved as a document if the e-mail is sent to DocuShare.
- ③ When updating documents included in DocuShare (erasing then is also included), the document right before the update is automatically displayed as the previous version. This function is useful to restore it in case it was updated or deleted by mistake.

And in case you use the Working Folder, which is an optional function of the DocuShare, you can go from the destination (from outside the campus) not only to Notes/Domino, but also refer directly to documents from the PC, tablet and smartphone, aspects that can dramatically improve the convenience and we plan to expand it to the future development of the International Higher Education Center.

Last but not least, I would like to thank the IIMC and the Information Department for their smooth cooperation regarding the Integrated Authentication System. As a result, our office's sharing and use of electronic files has become more safe and secured; it also became more convenient to use than before.

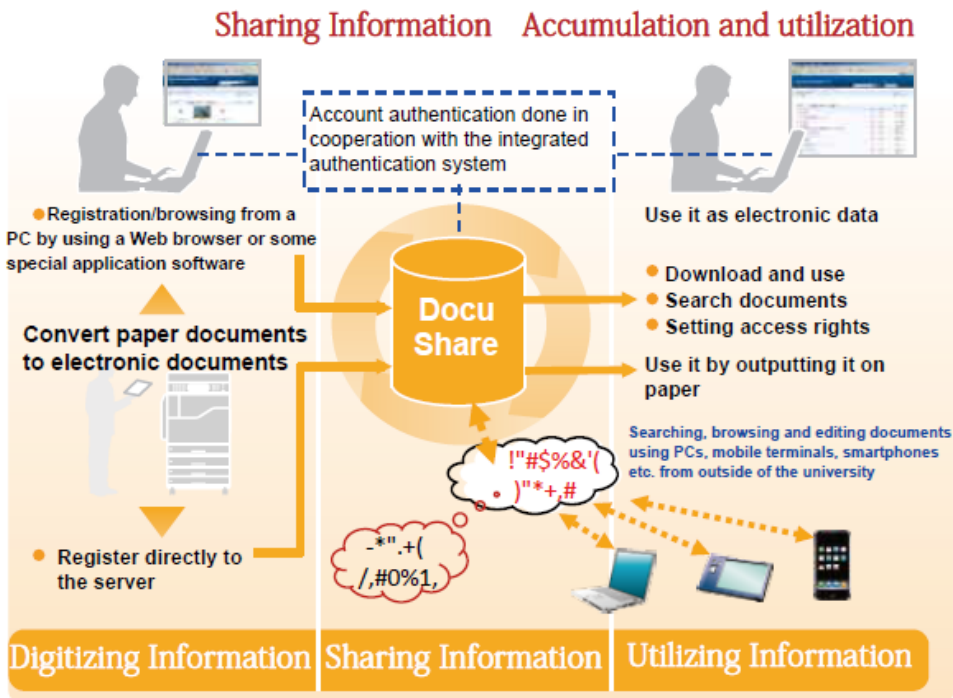


Figure 1. Image of using DocuShare

You can access DocuShare using the Web browser or PC dedicated software.
You can register and use documents from various environments such as MFP's input/printing, e-mail registration etc.

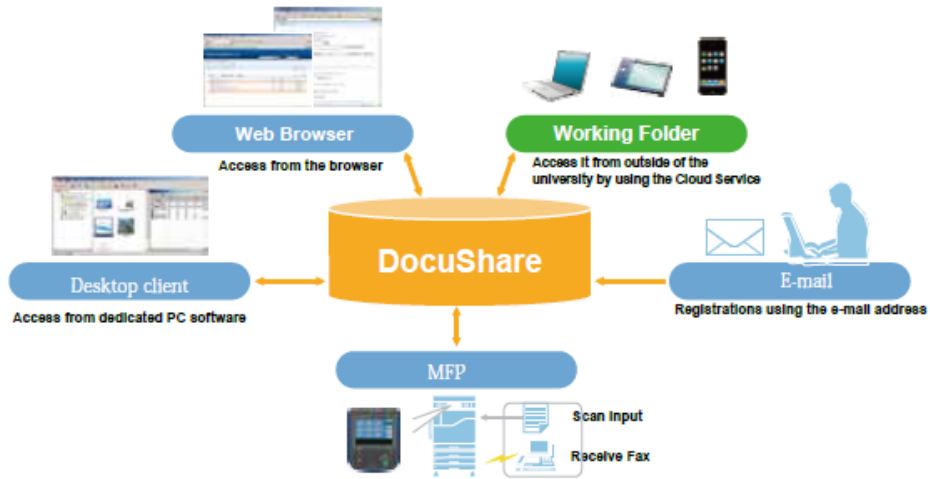


Figure 2. Various access pathways to DocuShare

(Kamijo Haruna: Office General Manager, Yoshida South Campus Common Affairs Department)

About the IIMC Website so far we heard the following opinions: there is a lot of information posted, but what kind of service is available and where can people find certain information is not clear etc. Therefore, in order to have more people accessing it than ever, we have renewed the Website aiming at making it easy to understand and we made it available since December.

Please have a look and give us your opinion on some of the points you noticed and about the information you would like to be posted.

<http://www.iimc.kyoto-u.ac.jp/>

The screenshot displays the homepage of the Institute for Information Management and Communication (IIMC) at Kyoto University. The header includes the IIMC logo and name in Japanese and English, along with navigation links for Information, Site Map, and Access. There are also options for printing the page, switching to Japanese, and a search bar with a Google Site Search integration. The main navigation bar features links for HOME, Service list, FAQ, and Inquiry.

The content area is divided into several sections:

- Top News:** A red banner with the headline "About protection for spoofing and rejection for receiving Gmail..."
- Search by user type:** A section with a "New Member" button and sub-buttons for "Students", "Faculty and Staff", and "Other".
- Search by needs:** A list of common user issues with links to solutions, such as "I forgot my password (ID). What should I do?...", "PIN is blocked.", "How to log in to the e-Learning system...", "How to clear the cache?", "[Windows10] I fail to log in the Financial Account...", "We can't access E-journals at home (off-campus)...", "I cannot connect to KUINS Wi-Fi services...", "I received a notification of my SPS-ID, but I can't...", "I fail to log in the system for accounting procedu...", and "When I accessed E-journal with my ECS-ID, I was re...".
- Information:** A section with tabs for "News", "Current Trouble", "Maintenance", "Security Alert", and "Event • Lectures". The "News" tab is active, showing a news item dated Dec.14, 2018: "Temporal suspension of browsing the webpage of IIMC".
- Right Sidebar:** Contains several utility links: "About IIMC", "Shortcut" (with links for ECS-ID Account Management, Common Portal for All students [to log in], Student Mail(KUMOI) [to log in]), "SPS-ID Account Management", "Kyoto University Faculty and Staff Groupware", "Faculty and Staff Mail (KUMail) [to log in]", and a red notice: "[Limited on-Campus] Notice about the New Kyoto University Faculty and Staff Groupware / E-mail System (KUMail)".

Website's top page

Once a month we invite lecturers from all fields of activity to Kyoto University's Academic Information Media Center to present us the content of their R&D activity and current challenges related to it; the participants are also of various kinds and we offer the opportunity to debate about the presented topics once a month in this monthly seminar.

Application in advance is not necessary for either case. We are looking forward to see many participants from inside and outside of our university.

Event information URL:

<http://www.media.kyoto-u.ac.jp/ja/services/accms/whatnew/event/>

■ March regular seminar "Large scale numerical calculation of coastal disasters"

Date and time: Tuesday, March 24, 2015 16: 30 ~ 18: 30

Place: Kyoto University Academic Information Media Center South Building 2F

Multimedia Lecture Room No.202

Program: 16: 30 ~ 17: 30 "Coastal disaster risk assessment associated with climate change" by Mori Nobuhito (Associate Professor, Disaster Mitigation Research Institute, Kyoto University)

17: 30 ~ 18: 30 "Predictive simulation of Tsunami compound disaster by numerical analysis" by Nozomu Yoneyama (Associate Professor, Disaster Prevention Research Institute, Kyoto University)

Contact: Academic Information Media Center Ushijima Sho

E-mail: [ushijima @ media.kyoto-u.ac.jp](mailto:ushijima@media.kyoto-u.ac.jp)

The IIMC holds various training sessions/workshops for users. The schedule for March is shown here. Please apply using the website of IIMC for those requiring an application. Training session/workshop information URL :

<http://www.iimc.kyoto-u.ac.jp/en/whatsnew/event/>

Event date	Seminar name	Registration	Capacity	Responsible team
4 th of March	PandA usage seminar	necessary	40 people	Educational support
5 th of March	Student ID (ECS-ID) usage seminar	not needed	—	Educational support
26 th of March	PandA usage seminar	necessary	40 people	Educational support
27 th of March	PandA usage seminar	necessary	15 people	Educational support

※ From 2015, the workshop on how to use the Student Account (ECS-ID) will be held in April and October as the "Support Institution Guidance" in cooperation with Kyoto University Library, Environment and Safety Organization and International Exchange Promotion Organization. Details will be announced on the website of the IIMC as soon as possible.

Information security issues (4th) “The information security of mobile PCs”

Which of the following do you think is more “dangerous” from the point of view of the information security: mobile terminals (including smartphones, tablets, etc.) or the personal computers? Actually, the mobile terminal is more dangerous! That is so because it is always switched on and connected to the internet. In the era when there were only personal computers, the best security measure was to switch off the power. It is safest to turn off the power of the mobile terminal, but the smartphone where we may be informed of urgent things is turned on even while sleeping. Even though smartphones use is unavoidable, let's turn off the power of terminals that we only occasionally use such as tablets etc.

For mobile terminals that are often used via wireless LAN (WiFi), doing encrypted communication such as WPA 2, using a mechanism such as VPN when entering the campus network (see the article on page 5) and I think you are also updating regularly the OS and the applications used. There are a few things you need to be aware of about mobile terminals.

On the mobile terminal, people download various applications (software) more frequently than on the personal computer. Do you read the application terms of use at that time? At the very least, let's use them after recognizing whether the application uses location information or contact information in the terminal, personal information or privacy information (Please do not go to the developer's website to obtain these pieces of information because it's a little troublesome as there are so many applications). Although it is an easy way, you can judge the safety of the app to some extent by referring to "review" and "reputation" of the app store. Also, Apple store in Apple series, Google system down from official application site called Google Plain Loading. Still Google Play has a precedent that malware was running and it is not completely safe. Apple store is said to be safer because it is reviewing the applications.

Also, it is very dangerous to click on advertisements inadvertently. There are also many advertisements where the author of the application inadvertently placed in a free application, and it seems there are malicious advertisement sites where malware is downloaded with one click.

Finally, have you installed some anti-virus software on your mobile device? I wonder if there are many people who haven't. Whether they are paid or free, various software programs are available, so please consider using them. Also, for

applications that could be risky, please make the decision of whether to use them or not only after gathering various kinds of information. The mobile terminal has already been used with the security precautions equal to or higher than that of the personal computer. Keeping this in mind, please enjoy comfortable the mobile life without information security accidents.

(Saito Yasuki, Professor of the IIMC Basic Information Division)