

Info!

Contents

1	Foreword about the 1 st number of Info! (The Public Information Magazine of the IIMC belonging to Kyoto University)	2
2	Guidelines for the University's Information System User Password -partial revision-	4
3	The OSL located in the North Building of the Academic Information Media Center reopened	5
4	We distributed documents in English about the services offered by the IIMC	5
5	We started the Web Housing Service	6
6	About the maintenance and expansion of the wireless LAN access points	7
7	We uploaded the replaced version of the Education and Research Activities Database	8
8	We held the IIMC workshop(orientation) for new staff	9
9	We started the Education of the Future edX:KyotoUx	10
10	We will be doing a collaborative research about (Web) content creation in 2014	12
11	Please use the KUMail Storage Service	13
12	Event Information	14
13	Workshop Information	15
14	We issued the 1st number of Info! (The Public Information Magazine of the IIMC)	15
15	Security topics (2 nd time) PW,PW,PW! (2 nd part)	16

This English translation is provided for informational purposes only

Info!-The Public Information Magazine of the IIMC of Kyoto University-
About the 1st issue

by the Director of IIMC Minoh Michihiko

I would like to thank you for using the IIMC services on daily basis. This time I would like to inform you that we decided to restructure KUINS News, a magazine that was providing information about the network, to the public information magazine Info!, which is a magazine that provides information about all the services of the IIMC, including the network ones. Thank you for enjoying reading KUINS News. Please enjoy reading the public information magazine of the IIMC called Info!

The IIMC was founded in 2005 as a virtual organization that supervises the Academic Information Media Center as an educational research organization and the information department of the headquarters secretariat, having the objective to improve the university's information environment from the point of view of design, management and maintenance. Considering that the department autonomy was strong, the role of the IIMC was small. At the beginning of the establishment its tasks were related just to the following: the network inside the campus, the supercomputer and the information processing for educational purposes. Especially for the supercomputer it was a time when the number of users decreased and the budget of the Media Center was facing difficulties in covering the electricity and water costs for it.

After the foundation of the IIMC, we started our activities strongly by clarifying the scope and the responsibilities of KUINS and the introduction of the beneficiary burden, the creation of a convenient supercomputing system (connect the PCs inside the laboratory to the supercomputer) etc. and strengthening the financial basis for the steady supply of basic information and the introduction of the authentication system as an information system for the whole university. This was the 1st step of the IIMC as an organization. From there on not only the student cards, the staff cards and the IC cards were made, but also the basis for an informatics environment university were created. At the same time with the creation of the IC cards, IDs and passwords were issued so that many information services could be used together. Also, we introduced the common university e-mail service and therefore we reduced the management problems of the department mailing servers and we closed some of them afterwards.

The second step was to optimize the information environment of the university and enhance the service. As the university became an independent corporation and the operation grants were being cut down, the improvement of the efficiency of the

information environment infrastructure was requested. The IIMC has set up an information environment plan in 2010 and decided to build a system that collectively manages the servers throughout the university. According to the plan, from 2014 we've developed a data center and started the activities for consolidating the servers inside the campus. In order to rule out the concern that the server is not near, we are promoting a stable operation of the network, shortening the recovery time in case of troubles and building a system that can be trusted. The fact that there is no computer right next to you decreases the management needs, the space needed and increases the people's freedom to engage in activities such as education and research. Please consider using the data center service.

The next one is strengthening the service, therefore the authentication, university e-mail, network etc., which are the services provided by the IIMC, shall be used by all people concerned. So far we were aiming our services such as the supercomputer at people who were experts and who could use it if they were given the system, the manual and some answers to a few questions. The technical staff of the IIMC is used to providing such services, but when it comes to providing services to general users it was necessary to create some awareness for it. We created an information environment support center as part of the IIMC in order to provide the necessary structure to help everybody. We are aiming at answering every question possible starting from the information environment to your PC. You can come to our office located in the South building of the Academic Informational Media Center, call or ask questions by using the web. Please feel free to do so.

For the third step we plan to expand the wireless LAN all over the university and strengthen the educational support. Since we received part of the University President's expense related budget we will start the 3-year plan for the wireless LAN expansion. This plan aims at allowing the use of the wireless LAN in all buildings across the campus. At the same time, we plan to introduce WiFi carriers such as "Docomo", "au" and "SoftBank" so that they will be used inside the university campus. Along with it we will renew the security policy of the university, redefine the role of KUINS and create a convenient and pleasant information environment. At the end of this plan, we will be considering working on a BYOD (Bring your own device) policy aiming at providing several services bases on the fact that students will bring their own mobile devices.

On the same period with issuing the public information magazine Info! we renewed the web page of the IIMC and we'll add information about the IIMC's services in an easier to understand manner. I am sincerely looking forward for your guidance and encouragement.

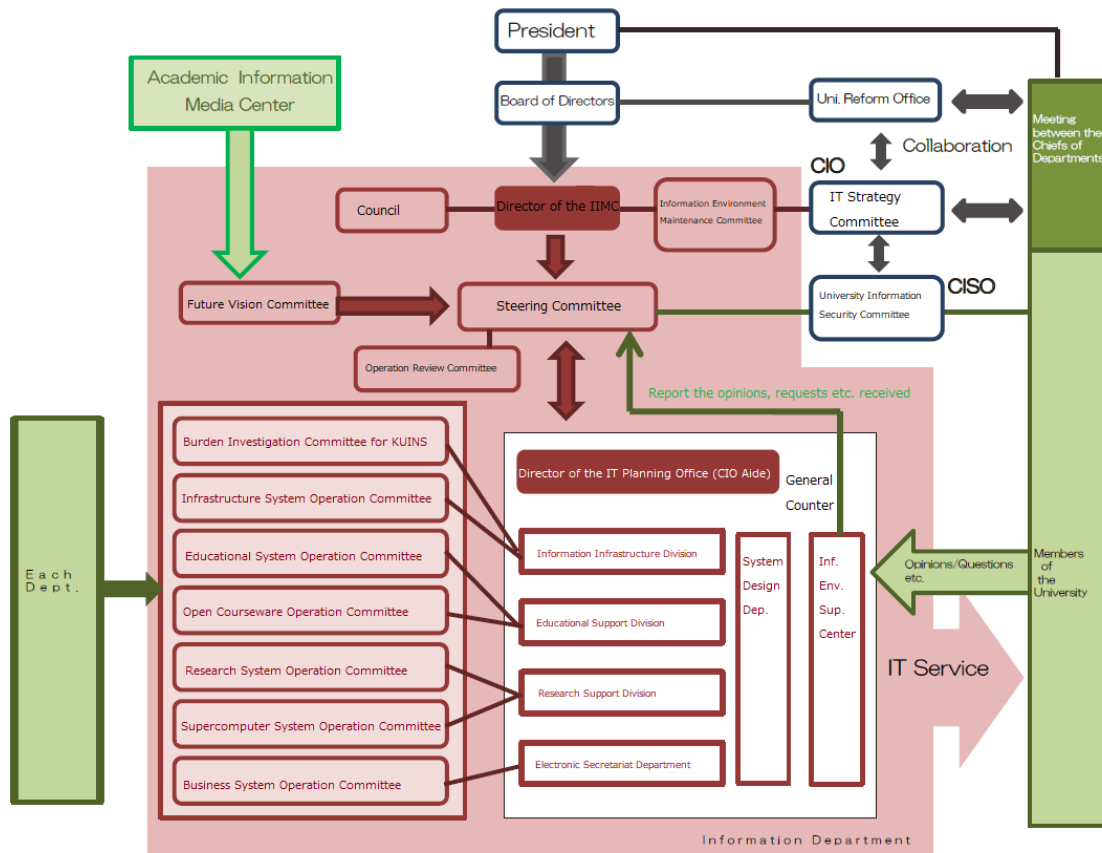


Image Diagram of the IIMC

Guidelines for the University's information system user password-partial revision

In order to increase the level of information security inside the university, we revised the Kyoto University Information system user's password guidelines and they were enforced since the 4th of February, 2014. This guideline also refers to the University's information system's connection accounts from the specific department information system and the passwords that are to be used. The revised measures will be set until the 31st of March 2015. We asked to take action quickly regarding the KUINS-III connections and the systems dealing with confidential information levels 2 and 3.

This revision includes the following 2 items.

- The minimum character string for the password changed from 6 to 8 characters.
- Among the characters that can be included in the password, underscore was added.

An excerpt from the main guideline named "2.2 Character string used for password" is given below.

The user's set password string characters should comply with all the items mentioned below:

- It should be at least 8 characters long.
- From a) to d) we state the following: it should have at least 1 alphabet/numeric character from a) to c) and it can have added another character from d).

a) capital letters

b) small letters

c) numbers

d) symbols

The following character strings should not be used as passwords because they are easy to guess:

- Character strings easy to guess from the author or the account information (name, user ID etc.)
- The ones mentioned above rearranged or along with added numbers or symbols
- dictionary headwords
- The names of celebrities or other proper nouns as such

For further details, please check the following items.

- Password Guideline for Users of Campus wide Information System (Japanese version)
http://www.iimc.kyoto-u.ac.jp/ja/services/ismo/documents/pdf_p/zengaku_joho_system_password_guideline-2nd.pdf
- Password Guideline for Users of Campus wide Information System (English version)
http://www.iimc.kyoto-u.ac.jp/ja/services/ismo/documents/pdf_p/Password-Guideline-for-Users-of-Campus-wide-Information-System.pdf
- Corresponding table between the new and the old guidelines.
http://www.iimc.kyoto-u.ac.jp/ja/services/ismo/documents/pdf_p/zengaku_joho_system_password_guideline-taisyohyou.pdf

The OSL located in the North Building of the Academic Information Media Center reopened

After the earthquake-proof work finished, the OSL of the Academic Information Media Center (North Building) that has been closed for a while restarted its service after renewal. OSL is located on the south side of the second floor and it has 2 rooms. We invite the people from the main and the North campus to use it for study.

■ Facility • Operating hours:

Place: Academic Information Media Center, North Building, 2F rooms 201 and 203.

Operating hours: Weekdays(Monday-Friday): 10am – 5pm.

Facility: Net booth PCs (60 computers), high speed printer (1 device)

■ Notes about using it:

- It automatically opens at 10am, when operating hours start
- At 5pm the PCs automatically shut down. Please finish your computer work by this time. Especially, please save or finish the files you are working on by 5pm because otherwise they will be destroyed.
- Please take care of the printer's toner and paper exchange by yourself. Some explanations about the way to use it are given.
- If you have any questions or issues to talk about please use the internal phone line 9009 (TA of the OSL in the Media Center, South Building) for any contacts.



Academic Information Media Center –North Building-



Location of the Academic Information Media Center -North Building-

(Yoshikazu Ishii: IIMC Education Support Department/ Information Department, Information Infrastructure Division)

[Notification]

-page 5-

We distributed documents in English about the services offered by the IIMC

This time we made an English brochure called “Outline of Information services” which is an overview of the services offered by the IIMC. The Research and Internationalization Division helped us make it. We are sending it to each department’s document supervising team and we expect that it will be given to and used by the new foreign staff joining our university.

(Nishigaki Masayo: Information Environment Support Center/ Information Department Information Promotion Division Information Service Chief)

We started the Web Housing Service

The IIMC made a “Data Center” as part of the North Building of the Academic Information Media Center and started from 2014 a server called “Web Housing Service”, as part of a department (laboratory). From this time, all the expenses related to the ventilation facilities, electricity savings, decreasing of CO₂, physical security, information security cost reduction, increase in trust, efficiency and productive management is being taken care of by it.

The web hosting service (VM hosting service and HP service etc.) and the e-mail service used on regular computer systems and their management, the overall server consolidation and place for the computer systems used in calculations for research etc. will be taken into consideration.

■ What is the web housing service?

The web housing service provides to servers held by the departments the installation space, the power supply equipment, the air-conditioning equipment and the information outlet. The merits for using this service are listed below:

- There is no need to invest in the power supply, ventilation, network information consent facilities when installing a server.
- When changing a server due to laboratory move etc., the space can be use wisely.
- The fee necessary for maintenance of the ventilation and other auxiliary items can be reduced.

Apart from this, as an option of the Web Housing Service, technical support for the server (information security support, data backup support) is available as an option. We can estimate a decrease in the charge of those services in case you will use this optional service.

■ Equipment, service type and cost of usage

For the Web Housing service we provide two types of computer rooms: for research and uninterruptible ones. For the uninterruptible ones we provide power supplies and ventilation necessary so that the network can run by using a private power generation system. In the case of natural calamities or planned power shut downs, these servers will not be affected.

But in this case an uninterruptible power supply source (UPS) is necessary.

As the network is concerned, we will provide a new network of 1Gbps and 1port of KUINS-II. In case of using an existent network, you can consult the KUINS personnel about it separately. For the power supply, we can provide a source of 100V or 200V.

As the type of the provided service, according to the server rack held by the applicant, it can be carry-in type or the IIMC can offer a rack space where to place the server. In that case it will be an open rack. The price for these 2 different types is shown below.

Usage Charge for the Web Housing Service

Classification	Computer Room	Usage Charge (yen/month)	Unit
Carry-in rack type	Computer Room for Research	10.000	per 1 rack
	Uninterruptible Computer Room	20.000	
Open rack type	Computer Room for Research	5.000	per 1 area (10U)
	Uninterruptible Computer Room	10.000	

Furthermore, about the amount of electricity used, according to the calculated electrical power of the computer and of the ventilation as a ratio, will be calculated and be seen as an expense fee.

In order to increase the physical security of the computer room, surveillance cameras and IC cards for accessing the room will be used. Furthermore, outside the working ours, 24h a day, 365 days a year, people will be in charge with the security of the building.

About the application method:

When a person asks for using the web housing service, at first will have to go through a hearing done by the technical staff. They will be explained about the content of the service, about the equipment used, starting time, options preferred etc. If there are further questions and requests, they shall be discussed on this occasion. As a result of the hearing, if it is decided to use the web housing service, the user will have to submit a pdf file called “Web housing service application for usage”.

■ Contact address:

In order to apply for the hearing, or if you have other questions, please contact the Support Center’s Office. The IIMC HP (<http://www.iimc.kyoto-u.ac.jp/>) shows the expenses and rules needed when using the web housing service. Please have a look there.

(Akasaka Koichi: IIMC IT Planning Room/ Information Department, Information Infrastructure Division/ Research Information Chief)

About the maintenance and expansion of the wireless LAN access points

This time it was decided that the IIMC will proceed to do the maintenance and the expansion of the wireless LAN access points. We were informed about the needs to use smart phones and tablets for the educational and research environment. Therefore we are trying to expand the availability of high speed wireless LAN networks of Wi-Fi carriers such as “NTT Docomo”, “au” and “Softbank” across the university campus.

We are planning to focus our attention on setting the LAN access points across spaces highly used by people such as lecture rooms, meeting rooms etc. We are also considering the replacement of wireless LAN devices several years after their setup.

Regarding this issue, we are taking feedback and requests from everybody concerned while proceeding with our plan. We appreciate your cooperation on this issue.

(Ishibashi Yoshiko: IIMC IT planning room/ Information Department- Information Infrastructure Division/ Information Chief)

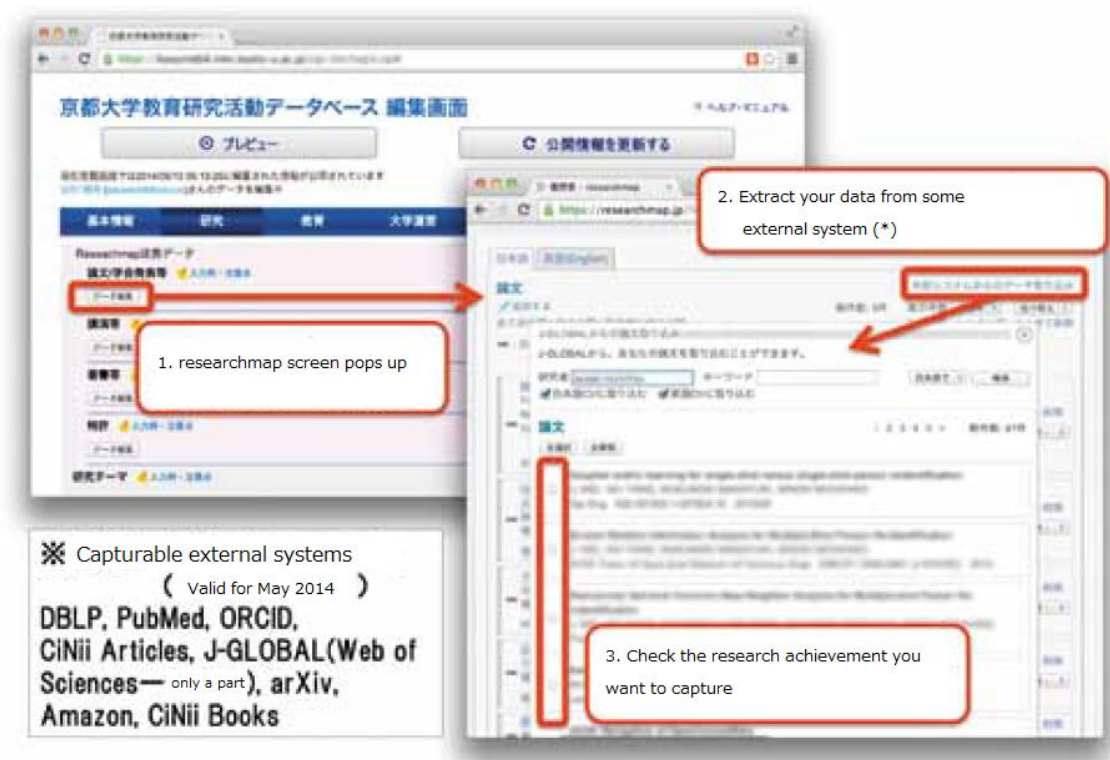
We uploaded the replaced version of the Education and Research Activities Database

According to the corrections to the Rules of Educations for Schools, starting from the 1st of April 2011, the Universities and other institutions have to make public some information about the education taking place there. On this occasion, in March 2011 we started to make an education activity database regarding the degrees and credentials of the teachers of our university. This database aims not only to serve the above mentioned purpose, but also to provide information about the education and research activity, a basic data for a certified evaluation and personal evaluation and can also be used for response to other requests.

The way of managing this database relies on uploading the research activity of each professor including their publications in a researcher search database, which is taken from the database available and the ones from each department. In the future each professor will be uploading their information and it will be the responsibility of the office of each department and of the main department.

Starting of March 2012, in order to manage together the research and educational databases existing separately inside the university, we gathered together the data in a better format called the “Educational and Research Activity Database”. Furthermore, from 2013, we gathered other information held by the departments from the past 10 years such as the annual reports and other official papers and we expect that the staff will check it by themselves so as to make it public by this August.

The most important feature regarding the replacement and renewal of the Educational and Research Activity Database is that the information of each professor will be listed into 4 independent categories: “Papers and Conferences etc.”, “Lectures etc.”, “Books and other Publications etc.” and “Patents”. This will be linked to the JST service and the researchmap service. This way, there will be no need to multiply input the information, the support service is expected to become more common and friendlier.



Cooperation screen with researchmap (capturing input images of research achievements)

Moreover, this database is according to the rules for education in schools is aimed at the people who have the public mission to take care of the education information in schools, such as full professors, associate professors, lecturers, assistant professors and others that are considered necessary by the university president. People already registered can choose to continue with the optional registration and so forth all the university staff can register. (However, a person who would request the optional registration needs to submit an application and receive the approval of the head of the department.)

From now on, the educational and research database should not be just an instrument complying with the law, but also one that responds to the multiple requests from inside and outside the school. We shall do our best to add the necessary tools for it. Please check the activity of our staff at Kyoto University by looking at this database.

Activity Database on Education and Research, Kyoto University

URL <http://kyouindb.iimc.kyoto-u.ac.jp/view/>

(Tanigawa Tohru: IIMC IT planning Room/Information Department, Information Promotion Division Project Chief)

We held the IIMC workshop (orientation) for new staff

On the 11th of April 2014 (Friday) an IIMC workshop was held. During this workshop, dedicated to the new Kyoto University staff, several issues were explained: the way to use and manage the Basic Information services offered by the IIMC regarding research and educational activities, the security and privacy policy that must be respected etc. The purpose was to support their start up activities. This time it was also transmitted by video to the Katsura campus who requested it. The number of people who took part in this workshop was 63 (60 from Yoshida and 3 from Katsura).

The content of the workshop is described below:

- Services offered by the IIMC
- Information Environment for Educational Purposes
- About the Staff Groupware
- Academic Information Network (KUINS) Management and Services
- The Basics of the Integrated Authentication System
- About the Kyoto University's Information Security Measures

We also asked the participants to do a survey and 41 of them answered. Considering the feedback we got, the positive points were: the outline of the services offered by the IIMC was concise and it was good to learn about the whole process. The things we should improve were: it took quite some time for preparation and there is an overlap for each of the provided service's content. Regarding the workshops they would like to take part in the future were: the use of Eduroam, details about the security management, details about the information security e-Learning, ftp server use (specific details about the KUINS data transfer protocol). We will try to fulfill their expectations during the following workshops.

The next workshop will be in October, so please tell the new employees to apply for it.

(Nishigaki Masayo: Information Environment Support Center/ Information Department
Information Promotion Division Information Service Chief)

Japan's first edX: KyotoUx (<https://www.edx.org/school/kyotoux>) has started on the 10th of April. This edX is an online IT program that is implemented also by the MIT and Harvard University and relies on interactive online education which is considered to be the education concept of the future: one type of MOOC(Massive Online Open Course). We called the one of Kyoto University KyotoUx. The first lecture is called "The Chemistry of Life" and will be given by Prof. Uesugi Motonari, Deputy Director of iCeMs Institute of Kyoto University. Part of it will be presented to you from now on.

For this lecture over 17.000 people registered from all over the world. Considering it was a class on a specific topic such as chemistry, having almost 20.000 people registered for the class was considered unusual by the edX staff. Prof. Uesugi's topic "Developing of Chemistry and Biology Knowledge focused imaginative ideas" lecture topic must have been seen as attractive. Inside this lecture, besides notions of chemistry and biology, ideas of philosophy and music which makes the connection to chemistry through Prof. Uesugi's lecture really enjoying and it makes you think about it over and over again.



During the first week, the introductory part starts with the story of Prof. Uesugi's girlfriend during high school when he taught his dearest girl the subject he knew best, but she failed the test getting 0 points. "The things you like are not easy to teach" is the moral of the story.



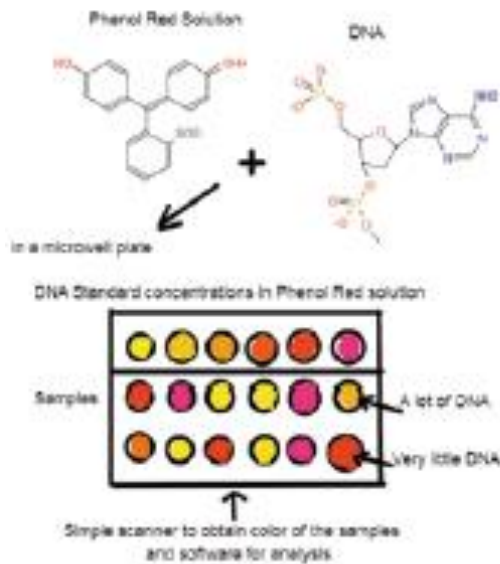
The weeks that followed, the 2nd and the 3rd, showed an increase in the number of registered members of up to 18,000. On the discussion forum some of the students introduced themselves and therefore creating a good atmosphere there. At the end of the 2nd week, the first assignment was given. It consisted in the practice of getting used to chemical formulas. Among the best 100 medicines' chemical formulas, using chemical formula tools, chemical formulas were to be written and put together with the meaning of the medicine in a sort of a constellation, creating a "medicine constellation". 2200 people took part in this assignment.

For this assignment, students were peer-reviewing each other based on the example shown by Prof. Uesugi. The ones getting the perfect scores were shown by the students to Prof. Uesugi, who would rate them himself. We'll show you the best of them.

The title of it is "The Happy Neuron", Adderall (amphetamine) is used to cure ADHD and narcolepsy. Both diseases show malfunctions of the brain. The patients need the hope given by this drug. The neuron receiving this medicine will become a happy neuron. Please check the drawing shown below.



During the 5th week's assignment, serious chemistry and biology containing ideas were given. The one below got the highest mark in the peer-review.



Public User name: Khay-Van-2

Title: Inexpensive solution for extracted DNA quantification

Summary: This professor was talking about "Inhibition" and "The other applications in real" principles. I thought of cell culture media which usually has got plenty of red to make the concentration of viable metabolites such as glucose. Why wasn't we substitute the cell culture with extracted DNA and use it to make the color change. We quickly determine the concentration using simple electronic scanner and probably software for analysis.

The truth is that this lecture contains a surprise. 5 students who scored highest in the assignment will be asked to come to Kyoto University. Moreover, one of them will be given the privilege to become Monbusho Foreign Student of Kyoto University.

For the people inside Kyoto University who just read this article we have some good news. You can still make it. Why don't you try to see for yourself how edX is? Lectures from famous universities around the world can be accessed. Your world will expand instantly!

■ For inquiries:

edX/OCW Promotion Room: Tel: 075-753-9081.

e-mail: request-ocw@media.kyoto-u.ac.jp

(Tosa Naoko: Professor of the IIMC System Design Division/ KyotoUx Program Manager)

We will be doing a collaborative research about (Web) content creation in 2014

Kyoto University's Academic and Information Media Center is looking for proposals for the 2014's implementation of the "Common research for web contents creation". This type of research is aiming at identity and novelty, but also at collaborating effectively for novel academic and educational web content development together with the staff and by using the center's facilities and its staff's skill and ideas in order to achieve this purpose.

The conditions for application are as follows.

We are looking forward to receiving questions regarding this application. Please contact us at the mentioned contact address.

■ Application acceptance period

From the 9th of June 2014 (Monday) to the 7th of July 2014 (Monday).

■ Taking application for the following

■ Qualification requirements

- Academic staff belonging to universities, junior colleges, colleges of technology or institutions interacting with universities and its equivalent

- Graduate students or its equivalent

- People conducting research belonging to countries or self-governing organizations having as a purpose performing academic research

- People who received Kakenhi Grant and are conducting academic research

- Other people that the chief of our center finds necessary

■ Application method

Please send us the application project documents (3pages) by post, Kyoto University internal mailing system or electronic mail by the 7th of July 2014. We will only use the provided personal information for the present application.

■ Judging method, Judging

The applications received will be examined by the Kyoto University Academic Information Media Center Web Contents Common Research Proposals Committee.

The research's novelty, identity, the plan's validity as well as whether it can be done within our center's budget for common research on web contents will be examined and either accepted or rejected accordingly. After a decision is made by the committee, it will be communicated to the applicant by e-mail by the end of July.

■ Download and detailed information of the application project documents

Please check the Web page below for detailed information regarding the joint research. You can also download the template of the application project documents.

<http://cpt.media.kyoto-u.ac.jp/collaborative/2014/>

■ Contact address • Document submission destination

If you have any questions about this application, please contact us at the following address. If possible, please send us a message before you apply.

Postal Number: 606-8501 Kyoto City, Sakyo Ward, Yoshida Nihonmatsu-cho
Kyoto University Academic Information Media Center (South building) Web
contents preparation room. E-mail: cpt@media.kyoto-u.ac.jp

(Motoki Tamaki: IIMC System Design Division Assistant Professor/ Web contents
preparation room/ Chief)

Please use the KUMail Storage Service

The IIMC provides an online storage system for delivering files called KUMail Storage Service.

This service does not use attached files to the e-mail for sharing files, but notifies the people who need it about the server's URL address (location) where the file is stored and those people can download it from that URL address based on setting the mail authentication and passwords. This way researchers from inside and outside the university can safely exchange files. As long as they have internet access, this online storage service can function for uploading and downloading files.

When using e-mail attachments, heavy files may not be send due to the size restrictions of the designated server, causing a burden to the server and potentially affecting other e-mails that are being sent or could require a long downloading time according to the internet environment. By using this service, it can reduce the probability of such problems to occur.

Please use it!

- Basic functions of this service
- We provide a 2GB user folder memory storage for each user
- For each user folder we set a web public folder and a receiving folder so that they can deliver the files so that they can handle file deliveries.
- Same as for the commercially available services, files can be uploaded to server by drag and drop.
- By using some security measures (e-mail authentication and password protection), the file sharing between researchers from both inside and outside the university can be done safely.

URL of the KUMail Storage Service:

http://www.iimc.kyoto-u.ac.jp/ja/services/mail/kumail/KUMail_fsv

(Nishigaki Masayo: Information Environment Support Center/ Information Department
Information Promotion Division Information Service Chief)

The Academic Center for Media Studies of Kyoto University holds on monthly basis lectures where invited teachers from different fields explain about their research and challenges to the members present. This is done in a seminar format once every month.

There is no need for prior application in order to take part in these seminars. People from both inside and outside of the university are welcomed.

The URL information event is <http://www.media.kyoto-u.ac.jp/ja/index.html>

■ June's Monthly Seminar

Date: 24th of June 2014 (Tuesday) from 16:30 to 18:30

Place: Academic Information Media Center South Building 2nd floor

Multimedia Lecture Room No.202

Title: Why? Your Department is not using the Cloud Service! We'll take away your fears!

Time Schedule:

16:30-17:30 Guidelines for Cloud Service and Hiroshima University's Efforts on this topic by Nishimura Koji

(Information Media Educational and Research Center, Hiroshima University)

17:30-18:30 Authentication Related Frameworks supporting the implementation of Cloud Service by Prof. Nakamura Motonori

(National Institute of Informatics)

Contact information: Academic Information Media Center/IIMC Nagai Yasuhiro

E-mail: ya.nagai@media.kyoto-u.ac.jp

■ July's Monthly Seminar

Date: 22nd of July 2014(Tuesday) from 16:30 to 18:30

Place: Academic Information Media Center South Building 2nd floor

Multimedia Lecture Room No.202

Title: New Research Style for the Cloud Age-Is ICT increasing the research activity?

Time Schedule:

16:30-17:30 Crowd4U: Why collaborating with academia to make a platform for cloud sourcing?! by Prof. Morishima Atsuyuki

(Basic Research Center for the Intellectual Community, Tsukuba University)

17:30-18:30 Academic research on the possibilities for Cloud Funding by Mutoh Ryosuke (CEO of Educational Design Inc.)

Contact information: Academic Information Media Center/IIMC Kono Kiyoshi

E-mail: kono.kiyoshi.2c@kyoto-u.ac.jp

■ Special Seminar

Time: 1st of August 2014 (Friday) from 16:00 to 18:00

Place: Academic Information Media Center South Building 2nd floor

Multimedia Lecture Room No.202

Lecture title: Improving the slideshows' efficiency: the visual ergonomics principles

Lecturer: John Augeri (Program Director of the University Numerique Paris Ile-de-France) (Note: this lecture is in English, no translator available)

Contact information: Academic Information Media Center/IIMC Saitou Yasuki

E-mail: saitou.yasuki.5x@kyoto-u.ac.jp

At IIMC we are doing workshops for several types of users. The schedule for the workshops from June to October is listed in the table shown below. For those that require prior registration, please use the IIMC Website to register for it. Workshop information URL: <http://www.iimc.kyoto-u.ac.jp/ja/whatsnew/tutorial/>

Event date	Workshop name	Registration	Capacity	Who is in charge
19 th of June (Thu)	Foundations and applications of IDL	Necessary	20 people	Research support
20 th of June (Fri)	Basics and applications of ENVI	Necessary	20 people	Research support
26 th of June (Thu)	Foundations of AVS	Necessary	20 people	Research support
27 th of June (Fri)	Applications of AVS	Necessary	20 people	Research support
1 st of July (Tue)	Student account (ECS-ID) usage seminar	Not needed	—	Educational support
3 rd of July (Thu)	Introduction to LS-DYNA	Necessary	20 people	Research support
4 th of July (Fri)	Introduction to ADAMS	Necessary	20 people	Research support
7 th of July (Mon)	Introduction to XeonPhi programming	Necessary	20 people	Research support
10 th of July (Thu)	Introduction to Nastran and Patran	Necessary	20 people	Research support

11 th of July (Fri)	Introduction to Marc	Necessary	20 people	Research support
4 th of August (Mon)	Student account (ECS-ID) usage seminar	Not needed	—	Educational support
24-25 th of July (Thu-Fri)	Cray XC Programming Environment Workshop	Necessary	20 people	Research support
5 th of Sept. (Fri)	Student account (ECS-ID) usage seminar	Not needed	—	Educational support
25 th of Sept. (Thu)	Introduction to numerical analysis programming (NAG edition)	Necessary	20 people	Research support
26 th of Sept. (Fri)	Introduction to numerical analysis programming (IMSL and Total View editions)	Necessary	20 people	Research support
Sept. (not yet fixed)*	Parallel programming course/ elementary level	Necessary	20 people	Research support
Sept. (not yet fixed)*	Parallel programming course/ elementary level	Necessary	20 people	Research support
Oct. (not yet fixed)*	IIMC Workshop	Necessary	100 people	Support center

*As soon as the date is decided, it will be posted on the IIMC's website.

We issued the first number of Info! (The Public Information Magazine of the IIMC)

As of April 2014, the IIMC of Kyoto University, according to the basic ICT strategy of Kyoto University, switched to a new structure in order to provide a fast user-focused IT service.

Along with this, “KUINS NEWS”, the public information magazine of the network system, which was issued for 25years, was renewed to the IIMC public information magazine renamed “Info!”. We will issue it as often as KUINS NEWS, 3-4times a year.

We would like to ask for an extensive support among the university staff so that the information content about the services and the activities of IIMC will make up a magazine with a familiar content for all of us.

As mentioned on the pages of this magazine, please feel free to share your questions, expected articles, requests about other magazines as well as impressions about the Support Center.

Same as for the “KUINS NEWS”, as well as for the people who didn’t know about it, we hope you would enjoy reading “Info!”.

Security topics (2nd time) PW, PW, PW! (2nd part)

I will continue explaining about the password (abbreviated as PW hereafter) issue. In the last article (KUINS News No 84-last issue) I explained about an easy way to make a password that is easy to remember and hard to forget.

This time I would like to talk about how to make lots of passwords without having to reuse them. Let's assume that you already have a password that is both strong and easy to remember. Let's call this password "StrongPassword". According to the service or purpose you want to make a new password for, you could use a brief character string to describe that service (For example, use FB for Facebook) and add it to the "StrongPassword". It's easy, isn't it? In case of Facebook, it becomes "StrongPassword-FB", for example. Please decide a rule by yourself regarding where you add it or whether you input a symbol in between them or not etc. How you represent a service name and the purpose of use is up to you. This is just one example, so please try to be inventive about it. If you are told to update them every 3 months, choose January(1), April(4), July(7), October(10) and add the information of the updated month. For example this becomes "StrongPassword-FB-1407. There are many ways of showing the year and the month, so please choose the one you like most. You may question whether it is ok to choose such an easy pattern, but instead of using the same password, this method is by far safer.

For the people who dislike setting rules, having the ID and PW included in the browser and by using a tool to record it may be the solution. Also using free tools such as Password Manager (partly costs money) is also possible. Similar software are: RoboForm, 1Password, LastPass, KeePass etc. Still, you will have to make and remember one so called "master password". Most of them are using the Cloud, therefore it is not suitable for people who fear the using it. The same way as the LastPass caused security issues in the past, you should judge carefully which one to use.

(Saito Yasuki, Professor of the IIMC/Information Infrastructure Division)